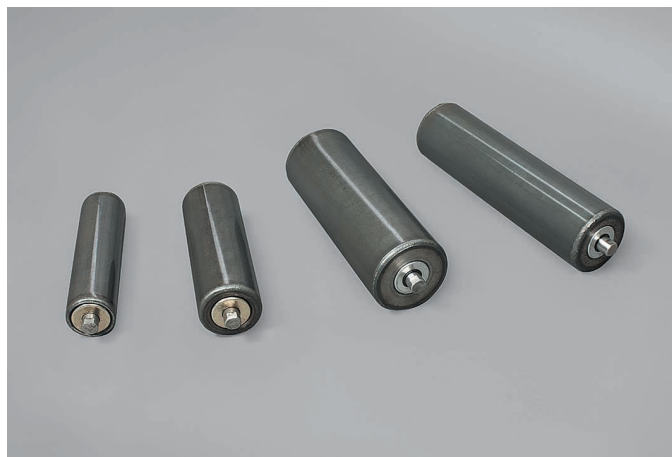


XP rollers



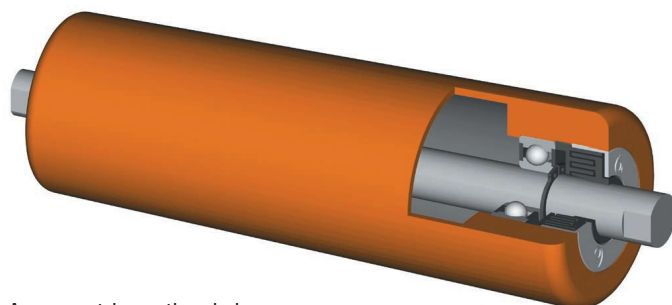
CHARACTERISTICS

"XP" series rollers feature:

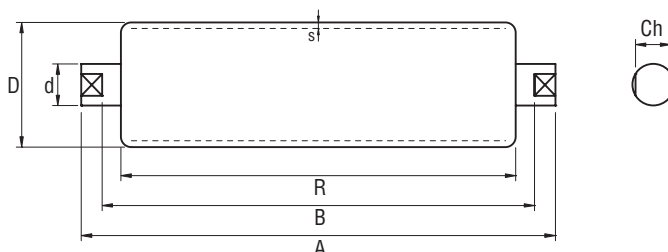
- High load capacity.
- Hermetically sealed bearings thanks to a multiple labyrinth seal with cover plate.
- Standard rigid radial ball bearings with lifetime lubrication and oil-tight shields.
- Monobloc bearing shell turned and welded to the tube.
- Ground steel shaft.
- Availability with different tube lengths, shafts and in different versions.

APPLICATIONS

High quality heavy-duty rollers for all indoor and outdoor applications, especially suitable for heavy loads and large size bulk materials in quarries, mines, cement works, recycling and disposal plants, etc. The multiple labyrinth seal allows these rollers to be used with excellent results in dusty and contaminated environments.



Axonometric sectional view



TECHNICAL SPECIFICATIONS AND DIMENSIONS

Type	D	s	d	A		R	Ch	Bearing	Weight		Max load Kg
				XP.20	XP.25 - XP.30				Kg (B=208)	per cm	
XP.20	60	3	20	B + 20	B + 24	B - 18	Standard 17 (or on request)	6204.2RS	2,000	0,067	650
	76	3.2							3,250	0,083	
	89	3.2							4,410	0,093	
	102	3.6							5,900	0,113	
	108	3.6							6,600	0,118	
XP.25	76	3.2	25	B + 20	B + 24	B - 18	Standard 18 (or on request)	6305.2RS	3,570	0,097	850
	89	3.2							4,730	0,107	
	102	3.6							6,220	0,127	
	108	3.6							6,420	0,132	
XP.30	89	3.2	30	B + 20	B + 24	B - 18	Standard 22 (or on request)	6206.2RS	5,125	0,124	1200
	102	3.6							6,615	0,144	
	108	3.6							7,315	0,149	

Dimensions shown in millimetres



TRADEL s.r.l. • Via F.lli Rosselli, 340
 Loc. Macchia • 84096 Montecorvino Rovella (SA)
 Tel. +39 089 980684 • +39 089 981792 • Fax +39 089 981907
www.tradel-rulli.it • E-mail: info@tradelsrl.it

