

XP/SF rollers

BELT CLEANING ROLLERS WITH MILD STEEL COILS

CHARACTERISTICS

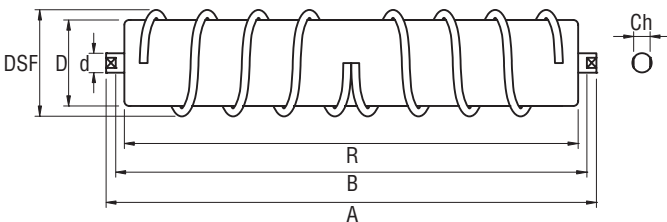
The characteristics of "XP/SF" cleaning rollers with mild steel coils are identical to those of the basic "XP.20" rollers, i.e.:

- High load capacity.
- Hermetically sealed bearings thanks to a multiple labyrinth seal with cover plate.
- Standard rigid radial ball bearings with lifetime lubrication and oil-tight shields.
- Monobloc bearing shell turned and welded to the tube.
- Ground steel shaft.
- Availability with different tube lengths, shafts and in different versions.

APPLICATIONS

"XP/SF" cleaning rollers with mild steel coils use the "XP.20" type unit in diameters D60 and D89 mm as the basic roller to which two opposing mild steel coils are welded to discharge detached material towards the sides of the belt.

Cleaning rollers with mild steel coils are utilised to support the belt on the return side and to clean its surface in applications involving the transport of material that tends to adhere to the belt.



TECHNICAL SPECIFICATIONS AND DIMENSIONS

Basic Roller	D	DSF	d	Ch	Bearing	A	R	Weight		Max load Kg
								Kg (B=208)	per cm	
XP.20	60	85	20	Standard 17 (or on request)	6204.2RS	B + 20	B - 18	2,23	0,072	650
	89	110						4,79	0,113	

Dimensions shown in millimetres



TRADEL s.r.l. • Via F.lli Rosselli, 340
 Loc. Macchia • 84096 Montecorvino Rovella (SA)
 Tel. +39 089 980684 • +39 089 981792 • Fax +39 089 981907
www.tradel-rulli.it • E-mail: info@tradelsrl.it

