

XP/BAR rollers

BEATER ROLLERS

CHARACTERISTICS

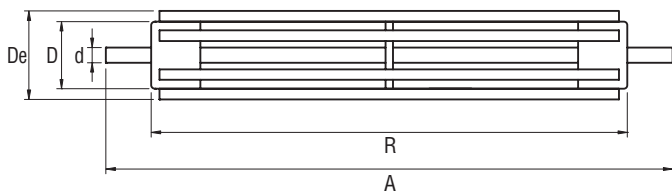
"XP/BAR" beater rollers with steel bars utilise D89 mm diameter "XP.20" and "XP.25" units as the basic rollers to which suitably spaced round section steel bars are welded. Beater rollers can either have a closed core or be of open self-cleaning construction.

APPLICATIONS

Beater rollers are installed on the return side of the belt, mainly on crawler vehicles, where they serve to impart a vibratory movement to the belt to cause the detachment of incrustations of adhering material.



VERSION A



VERSION C



TECHNICAL SPECIFICATIONS AND DIMENSIONS

Version	D	d	De	R	A
A	67	20	91	On request	On request
		25			
C	89	20	113	On request	On request
		25			

Dimensions shown in millimetres