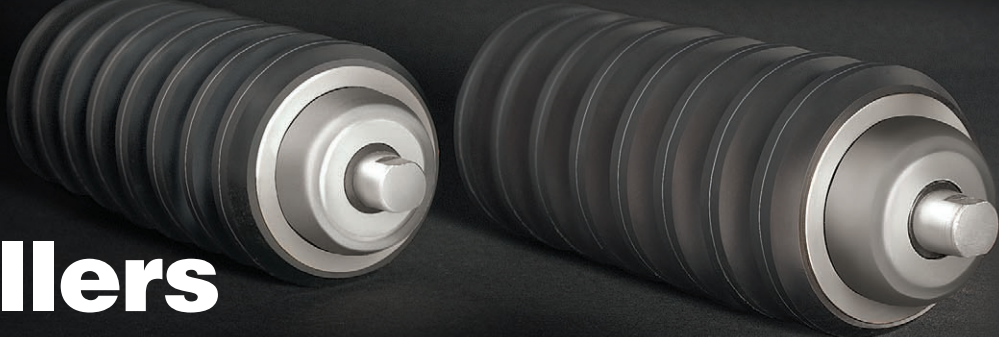


XP/AM rollers



SHOCK ABSORBING OR IMPACT ROLLERS

CHARACTERISTICS

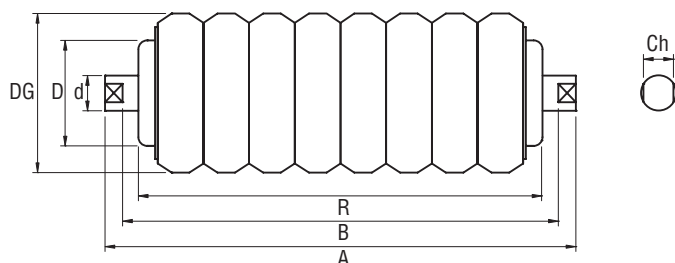
The characteristics of "XP/AM" shock absorbing or impact rollers are identical to those of the basic "XP.20" rollers, i.e.:

- High load capacity.
- Hermetically sealed bearings thanks to a multiple labyrinth seal with cover plate.
- Standard rigid radial ball bearings with lifetime lubrication and oil-tight shields.
- Monobloc bearing shell turned and welded to the tube.
- Ground steel shaft.
- Availability with different tube lengths, shafts and in different versions.

APPLICATIONS

Shock absorbing or impact rollers use the "XP.20" unit in diameter D60 mm as the basic roller, to which D89 - D108 - D121 diameter rubber rings are fitted.

Shock absorbing rollers are utilised in materials impact points because, thanks to the elasticity of the rubber rings, they are able to absorb and dampen shock loads caused by dropping of material onto the belt.



TECHNICAL SPECIFICATIONS AND DIMENSIONS

Basic Roller	D	DG	d	Ch	Bearing	A	R	Weight		Max load Kg
								Kg (B=208)	per cm	
XP.20	60	89	20	Standard 17 (or on request)	6204.2RS	B + 20	B - 18	2,650	0,105	650
		108						0,135		
		121						0,154		

Dimensions shown in millimetres



TRADEL s.r.l. • Via F.lli Rosselli, 340
 Loc. Macchia • 84096 Montecorvino Rovella (SA)
 Tel. +39 089 980684 • +39 089 981792 • Fax +39 089 981907
www.tradel-rulli.it • E-mail: info@tradelsrl.it

