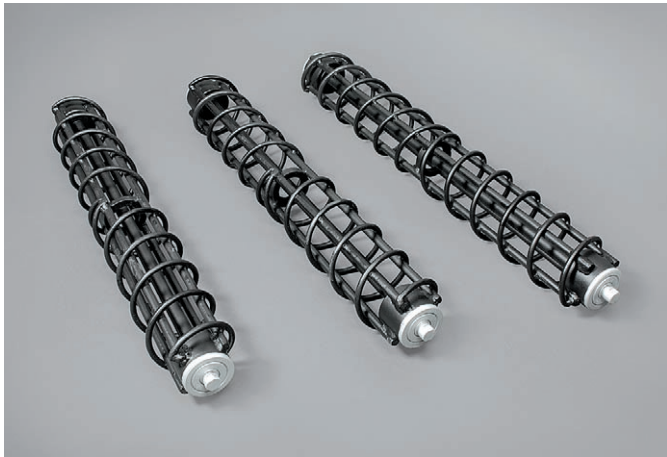
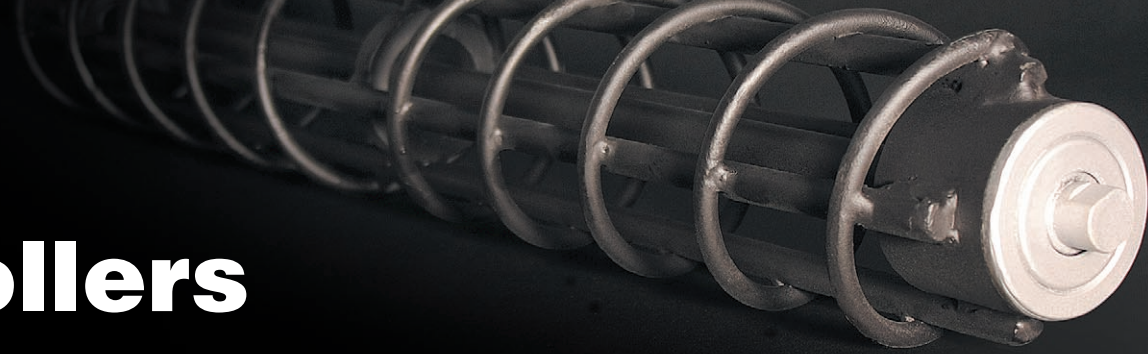


GSS rollers



SQUIRREL CAGE ROLLERS WITH MILD STEEL COILS

CHARACTERISTICS

The main characteristics of "GSS" rollers are their extreme versatility and ultra-high performance:

- Conveyed materials, even high-tack products, are not retained by the roller;
- No diameter increase of the roller, which would otherwise result in sideways skewing of the belt with consequent egress of material and damage to the conveyor.

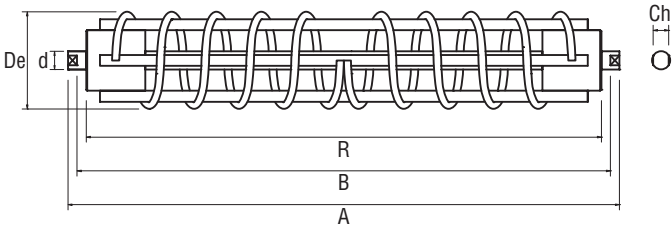
The "GSS" construction system allows fast replacement in the event of wear of the shaft and the bearing/labyrinth seals assembly.

APPLICATIONS

"GSS" squirrel cage return rollers with mild steel coils are fitted on the return side of the conveyor belt.

The use of "GSS" rollers is critical when conveying high humidity and/or tacky materials.

The completely open structure allows this type of roller to keep the conveyor belt constantly clean.



TECHNICAL SPECIFICATIONS AND DIMENSIONS

Belt width	B	De	d	A	R	Ch	Bearing	Weight Kg
400	508	110	20	B + 20	B - 20	Standard 17 (or on request)	6204.2RS	5,82
450	558							6,23
500	608							6,64
600	708							7,46
650	758							7,87
700	808							8,28
800	958							9,51
1000	1158							11,15
1200	1408							13,20

Dimensions shown in millimetres



TRADEL s.r.l. • Via F.lli Rosselli, 340
 Loc. Macchia • 84096 Montecorvino Rovella (SA)
 Tel. +39 089 980684 • +39 089 981792 • Fax +39 089 981907
www.tradel-rulli.it • E-mail: info@tradelsrl.it

